



*People, Partnerships & Passion;
Building on the Best for the Future!*

Exceeding Expectations for more than 20 years.

WHO WE ARE

Neta Scientific, Inc. is a leading distributor of laboratory supplies, solutions, and safety products to the Life Science and Pharmaceutical industries. Founded by Winfred and Garnetta Sanders, Neta Scientific, Inc. is a family-owned and operated business based in Hainesport, NJ.

For over 20 years, Neta Scientific, Inc. has provided our customers in the pharmaceutical, biotechnology, and academic industries, a robust catalog of world-leading brands like Agilent, MilliporeSigma, Corning, Cytiva, and IKA Works, to conduct cutting-edge R&D safely and effectively. As a diverse aggregator and neutral provider, our products are trusted, preferred, and always offered at a fair market price.



National Distributor of Life Science Supplies & Equipment

Enabling Researchers to focus on thier research and development



Comprehensive Lab Services Provider

through our LEAPS Division



Neutral & Sustainable Third-Party Procurement Support

Neta hosted catalogs of products from world leading brands



Diversity Certifications

on the National, State and Local level



Flexible Supply Chain Management

providing timely products with a fair price



Customer-Centric Approach -

Always real-time live Customer Service Support



OUR VISION

The company's vision is to build "The Neta Brand" to be synonymous with Integrity, Excellence in Supply Chain Management, and Optimum in Customer Satisfaction.

OUR MISSION

Our mission is to provide our customers access to a robust catalog of world-leading brands to conduct cutting-edge research and development more effectively. We provide our customers with centralized superior lab supplies, personal protective equipment and supply chain management. Additionally, we deliver third-party support for industry-leading suppliers, including OEM contracts, parts, consumables, services and reporting while meeting tier 1 diversity spend to drive operational efficiencies and positive economic outcomes nationwide.

OUR HISTORY

Founded in 1999, by Winfred and Garnetta Sanders, Neta Scientific, Inc. became a product distribution company. They were a distributor for Agilent chromatography products, selling into the pharmaceutical, life sciences, biotechnology and academia markets.

In 2015, the LEAPS Division was formed as a service provider to new and existing customers within the global science market with convenient access to end-to-end lab services. Capital procurement, OEM Contract administration and relocation services were added in 2016, allowing tier 1 diversity spend and cost savings to drive operational efficiencies and economic outcomes nationwide.

In 2019, Raw Chemicals Sourcing was added to the LEAPS Division giving Neta a strong foundation to provide third-party support for major brand suppliers, as well as OEM contract, parts, consumables and services.

People, Partnerships & Passion; Building on the Best for the Future!



THE EXECUTIVE TEAM



Garnetta Sanders is our **Co-Founder and Chief Executive Officer**, a position she has held over the company's 20-year history. Before founding Neta Scientific, Inc., Mrs. Sanders was an educator for over 30-years at Franklin High School in Somerset, NJ, where she taught Family and Consumer Science as well as supervised the Related Arts Department. Mrs. Sanders earned her bachelor's in Education from North Carolina Central University.



Winfred J. Sanders, Ph.D. is **Co-Founder and the President** of Neta Scientific, Inc., a position he has held since the Company's conception. Winfred began his career at GSK as a senior scientist and then as the Director of Pharmacokinetic Studies in Animal Health. He joined Hewlett Packard as their Global Application Manager in Marketing. Winfred lead the business plans and strategies of R&D, Manufacturing, and Marketing as Global GM, Consumable Products. In 2000, he and his wife, Garnetta, opened the doors to Neta Scientific, Inc. Winfred earned his bachelor's in Chemistry from North Carolina Central University and completed his graduate studies at Princeton and Rutgers Universities, where he earned his masters and Ph.D. degrees, respectively.



Dr. Dragan Karajovic, MBA is our **Vice President of Business Development**, a position he has held for three years. Dr. Karajovic leads the strategic planning, implementation, and execution of comprehensive Business Development activities in the areas of Sales, Marketing, and Supplier Management. Before joining Neta Scientific, Inc., Dr. Karajovic held a variety of leadership roles, including Vice President of Corporate Development for MP Global Enterprises, Vice President and General Manager for Americas, and Global Vice President of Marketing and Sales for MP Biomedicals, LLC. Dr. Karajovic earned his Doctor of Dentistry at The Faculty of Dentistry of the University of Belgrade and an Executive MBA from Kent State University.



Eric Toatley, MBA is our **Vice President of Operations**, a position he has held for over 12 years. As one of the four original employees of the company, Mr. Toatley has built various operations capabilities throughout the organization, including web development, IT systems & infrastructure, accounting, and pricing. Before joining Neta Scientific, Inc., Mr. Toatley was a Senior Retail Sales Manager at RadioShack. Mr. Toatley earned a bachelor's degree in Life Science from Drexel University as well as a Leadership focused MBA from Rutgers University.



Branetta Toatley is our **Vice President of Fulfillment**, a position she has held for over 14 years. As one of the four original employees of the company, Mrs. Toatley established the framework for various fulfillment and personnel departments throughout the organization, that includes Human Resources, Administration, Customer Service, and Warehouse Inventory Management. Mrs. Toatley earned a bachelor's degree in English from Hampton University.

CUSTOMER CENTRIC APPROACH

People are at the Heart of What We Do.

Dedicated sales and support teams

Real time 'live' customer service

Educated field sales

Administration

Contract management

Pricing

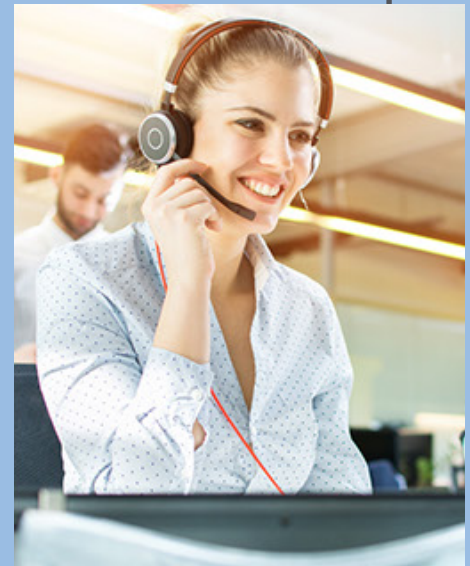
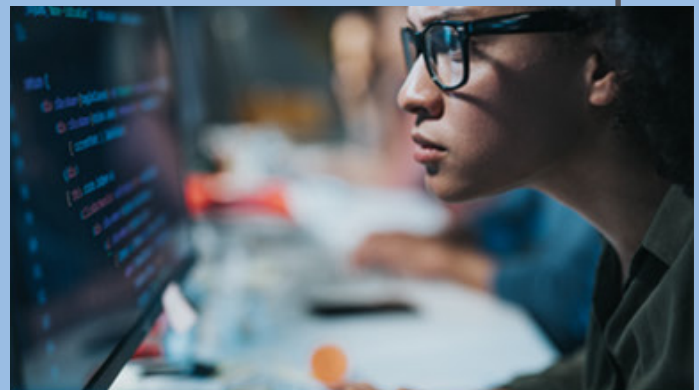
Marketing

IT

Warehouse management

Inventory management

Procurement support



Exceeding Expectations

THE NETA WAY

In every interaction with our staff, suppliers and clients, we demonstrate our five core values which are the foundation to our Credo,

“Exceeding Our Customers’ Expectations In Everything We Do!”

Our team is both educated and manufacturer-trained, with an inherent commitment to reliability and accountability.



INTEGRITY



MUTUAL RESPECT



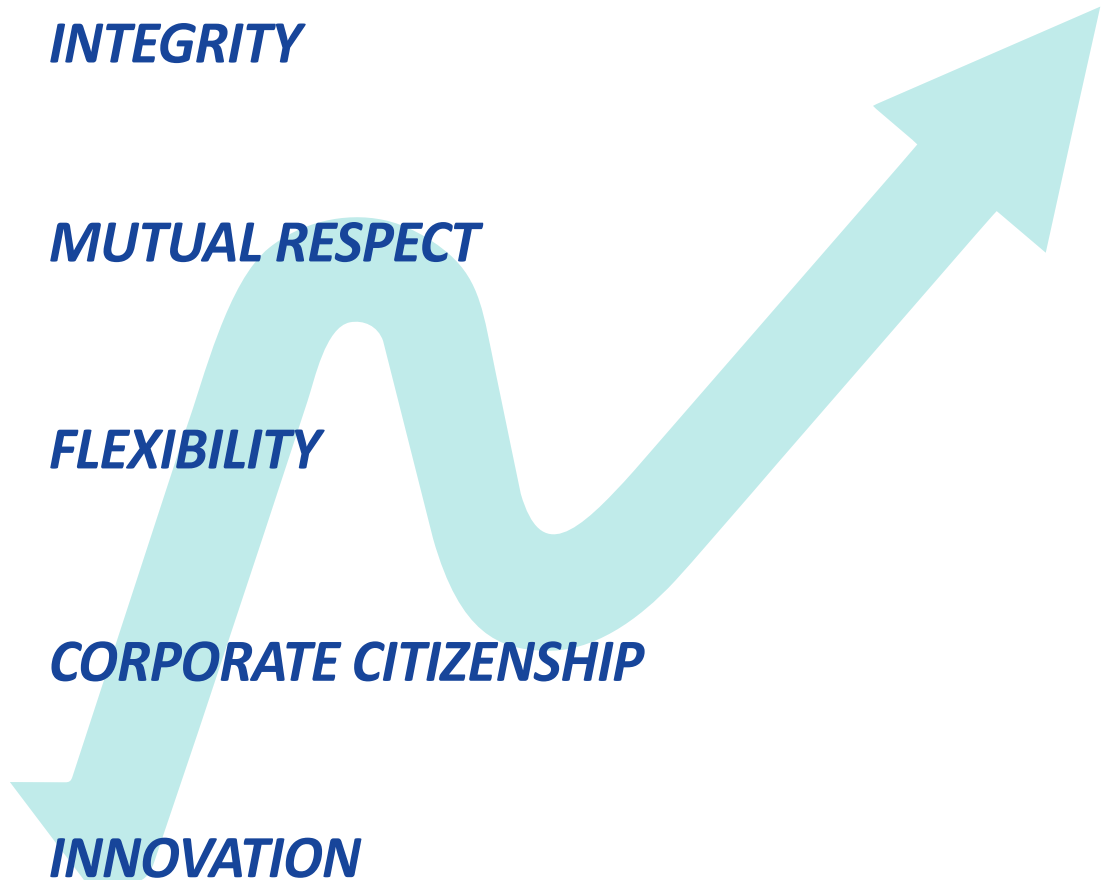
FLEXIBILITY



CORPORATE CITIZENSHIP



INNOVATION



CORPORATE CITIZENSHIP



Neta Scientific, Inc. is a proud donor and supporter of Seeding Labs. Seeding Labs is a provider of donated high-quality lab equipment and resources to scientists in developing countries at universities and research institutions, giving them access to the tools and equipment needed to participate in the global science community.



adopt a FAMILY

Over the past few years, Neta Scientific, Inc. sponsored a family in need in the community throughout the holiday season, providing gifts and other essentials for the family.



In 2019 and 2021, Neta Scientific, Inc. has participated in the American Cancer Society's Annual Race For The Cure Walk-A-Thon. We plan to continue supporting this worthy cause.



People are at the Heart of Everything We Do.



DIVERSITY CERTIFICATIONS

Neta Scientific, Inc. is a minority and woman owned business, possessing diversity certifications from Federal, National, State and Local agencies that help companies go above the expected.

FEDERAL

WOSB (Woman Owned Small Business)

SAM/SBA/CCR/ ORCA

NATIONAL

WBENC (Woman Business Enterprise National Council)

NMSDC (National Minority Supplier Development Council)

STATE

GNEMSDC - (Greater New England Minority Supplier Development Council)

MWBE (Minority And Women-Owned Business Enterprise) – NJ, NYC, DE

MBE (Minority Business Enterprise) –NY, DE, WI, MD

SBE (Small Business Enterprise) – CA

EMSDC (Eastern Minority Supplier Development Council) – PA, NJ, DE

MSDC (Minority Supplier Development Council) – Chicago, IL

SWAM (Small, Women-Owned, And Minority-Owned Business) – VA

WBE (Woman Business Enterprise) - NY, DE, WI



MARKETS WE SERVE

Providing World Leading Brands, Capital Equipment, Procurement Support, Support Services, and more.

Pharmaceutical

Academia

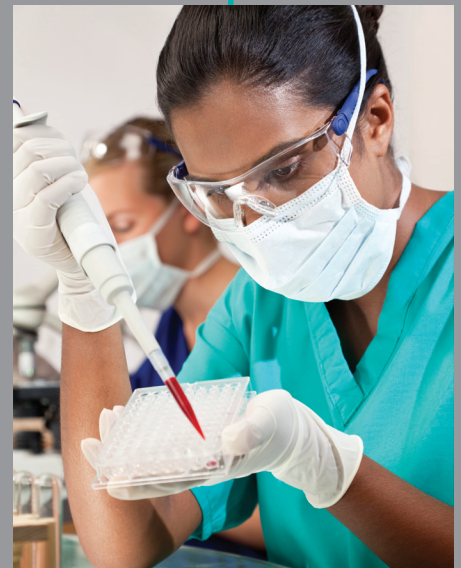
Government

Clinical

Industrial Manufacturing

Food & Beverage

Fragrance & Cosmetics



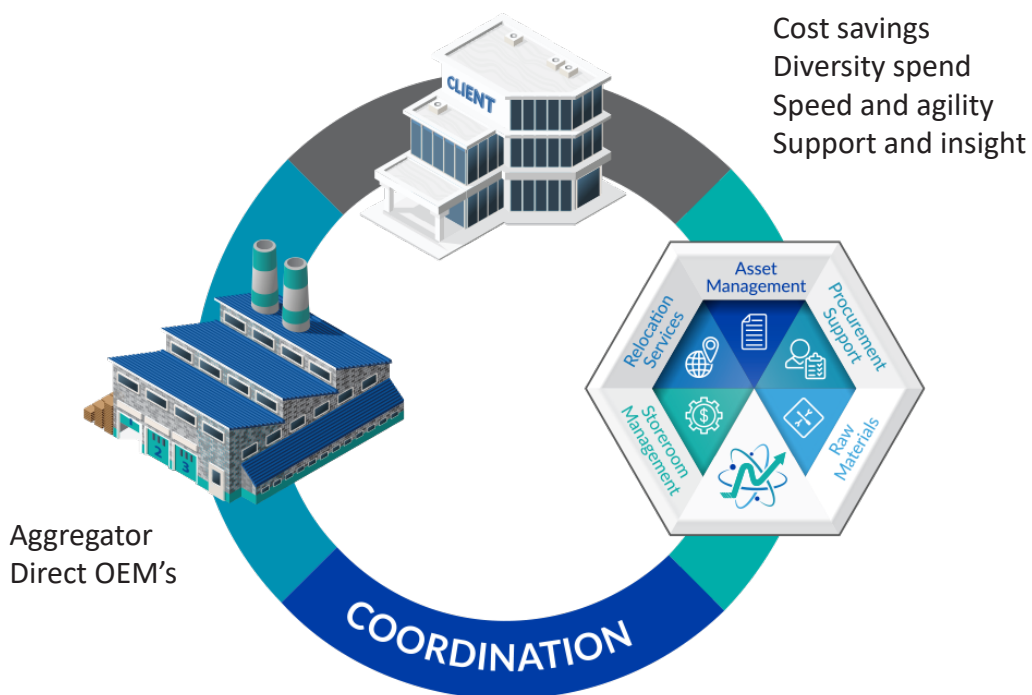
*People, Partnerships & Passion;
Building on the Best for the Future!*

*Driving Operational Efficiencies,
and Delivering Cost Savings*



LEAPS

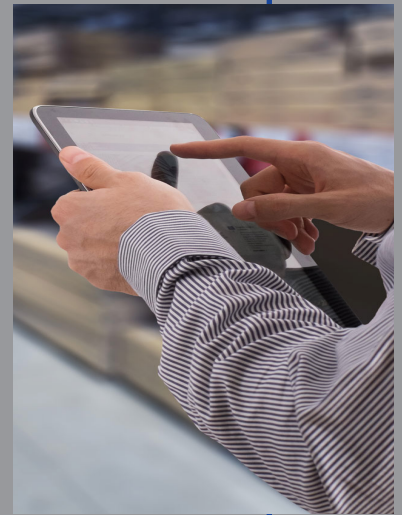
Laboratory Equipment Asset Procurement Services is an integrated program created by Neta Scientific, Inc., and launched in 2015 to help companies drive operational efficiencies and deliver cost savings. We offer new and existing customers in the global science market with convenient access to end-to-end lab services and insights. We have 5 core capabilities: Asset Management, Procurement Support, Raw Materials, Stockroom Management, and Relocation Services.



Asset Management



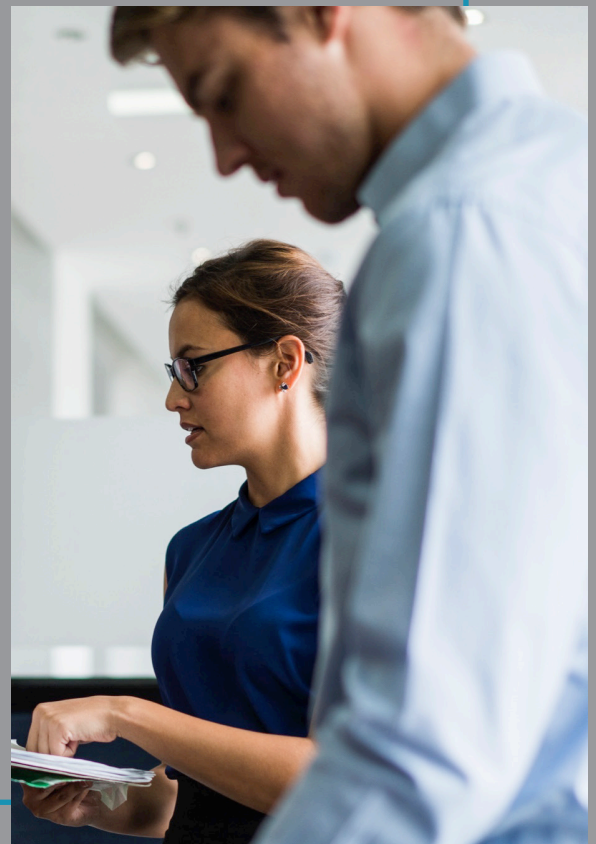
- OEM Service Contracts
- On time renewals
- Entitlement program management
- Reduction in administrative burden
- Third-Party Repair Partner
- Coordinate/Manage
- Maintain/Repair
- Asset Tracking
- Proactive warranty management
- Asset location
- Customer defined reporting



Procurement Support



- Augment Procurement Department
- Capital equipment
- Tail-spend/spot buy assistance
- Negotiate better pricing
- Support supplier reduction
- Sourcing - national/global
- Consolidate operation
- Administrative relief
- Align billing terms
- Support all departments
- Streamline invoicing



Direct Materials



Chemicals
Sucrose
Sodium Citrate
Sodium Chloride
Solvents
Buffers
Active Pharmaceutical Ingredients (API)
Pharmaceutical Grade Excipients
Multi-compendial (USP, EP, JP)

Areas of Support
R&D
Manufacturing
Packaging FDA compliant
Flexible packaging options



Relocation Services



Project Management Coordination
Small and large laboratory moves
Administrative Support
Accounts payable relief
Streamline billing under one vendor
Lead or supportive role for onsite management
Flexible
Quickly respond to suppliers



Storeroom Management



Inventory management
Real-time stock information
Manage multiple sites & stockrooms
Manage stock levels & re-order points
Handle batch & expiring goods
Dashboards (supply, quality and finance)
Inventory stock transactions
Key features of inventory system
Secure cloud base system

Barcoding scanning capabilities
Reporting
Quick setup
Export to excel





CORE CAPABILITIES

For over 20 years, Neta Scientific, Inc. has provided our customers in the pharmaceutical, biotechnology, and academic industries, a robust catalog of world-leading brands like Agilent, MilliporeSigma, Corning, Cytiva, and IKA Works, to conduct cutting-edge R&D safely and effectively.

Our robust portfolio include chromatography consumables and supplies, Life Science reagents, kits and consumables, portfolio of cutting-edge benchtop equipment, cold storage products, refrigerators and ultra-low freezers, glassware & plasticware, lab safety products/PPE.

Operations

Integrated Service Solution focused on your lab's success

Flexible ordering methods from e-commerce to fax

Full catalog enablement with ERP/Systems: Hosted, Level I, and Level II Punch-Out Catalogs

Custom orders and payment terms (Digital & Paperless)

cXML, EDI, HTML document transfer protocols



Fulfillment

The Fulfillment team at Neta Scientific, Inc. has provided our customers in the pharmaceutical, biotechnology, and academic industries, with care and attention to detail in every communication and transaction since the beginning. We have continued to improve upon that customer experience to Exceed Expectations every time.

We currently have three warehouse locations in NJ & AZ to meet your needs efficiently and timely. As well as sales representation throughout the United States. We strive for excellence by continually improving processes and SOP's within our organization.



SUSTAINABILITY INITIATIVES

Neta Scientific, Inc. maximizes Recycled Content by reusing corrugated boxes, when suitable, for product shipments. If not suitable, using an industrial cardboard shredder in our Hainesport, NJ warehouse, Neta Scientific, Inc. turns corrugated boxes and containers into cushioned packaging inserts for use in product shipments.

Additionally, Neta Scientific, Inc. participates in Waste Management's Recycle Often. Recycle Right.SM program to practice simplified recycling by

1. Recycling all bottles, cans, and paper,
2. Keeping all items clean and dry, and
3. No plastic bags.
4. Energy efficient practices (LED light bulbs, water usage, etc)

Therefore, separate paper and plastic recycling bins are available in every office area. These areas include, break rooms, conference rooms, each workspace, and warehouses. Employees are encouraged to separate recyclables in accordance with the program.

Many of our suppliers maintain sustainability programs in their manufacturing processes. These programs include No EPS or PPE Foam in packaging, minimal percent of packaging per product, and offer more products of category 1 or 2 recyclable plastics. Through our partnerships, we collectively work together to reduce our carbon footprint in the manufacturing and distribution segments of the industry.



NEWS & AWARDS



2021 Steuben Partner Award from Corning Life Sciences

2020 U.S. Small Business Administration's Region 2 Business Subcontractor of the Year

2020 ILDA Recognition of 10 Years of Continuous Membership

2020, 2019 America's Fastest Growing Private Companies- Inc. 5000

2020, 2019 Nations' Largest Private Black-Owned Businesses- Black Enterprise BE 100s

2019, 2020 Diversity Alliance for Science Supplier of the Year

2019 Seeding Labs Innovator of the Year



Steuben Partner Award 2021 from Corning Life Sciences.



Seeding Labs 2019 Innovator of the Year



Diversity Alliance for Science 2019, Supplier of the Year

*People, Partnerships & Passion;
Building on the Best for the Future!*



Exceeding Expectations for more than 20 years.

